



# KM-515M\_H

## SLIM-LINE MODULAR CRESCENT CUBER



KM-515M\_H  
03/30/17  
Item # 13217

**W x D x H**  
22" x 27<sup>3/8</sup>" x 30<sup>5/16</sup>"



### KM-515MAH ★

Air-Cooled

Shown on optional bin B-300

### KM-515MWH

Water-Cooled

### KM-515MRH

Remote Air-Cooled



Item #: \_\_\_\_\_  
Project: \_\_\_\_\_  
Qty: \_\_\_\_\_  
AIA#: \_\_\_\_\_

## Features

- ▶ Individual crescent cube
- ▶ Stainless steel evaporator
- ▶ CycleSaver™ design

- Up to 527 lbs. of ice production per 24 hours
- Durable stainless steel exterior
- Protected by H-GUARD Plus Antimicrobial Agent
- EverCheck™ alert system
- Mount two units side-by-side for 1,054 lbs. per 24 hours (in only 44" of floor space)
- Removable air filters (Air-cooled model only)
- R-404A Refrigerant

### Available on Bins:

B-250PF B-700PF/SF B-1150SS B-1650SS DM-200B  
 B-300PF/SF B-800PF/SF B-1300SS DB-130H  
 B-500PF/SF B-900PF/SF B-1500SS DB-200H

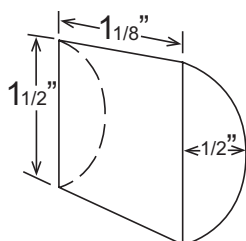
Top kit may be required. See Bin Spec Sheets.

### Warranty:

3 Year Parts & Labor on entire machine. 5 Year Parts & Labor on Evaporator. 5 Year Parts on Compressor; air-cooled condenser coil. Valid in United States, Canada, Puerto Rico and U.S. Territories. Contact factory for warranty in other countries.

Condenser	Model	ICE PRODUCTION				WATER USAGE			ELECTRICAL				Heat Rejection BTU/hr.	Shipping Weight	ENERGY STAR®
		Air / Water Temp Lbs. per 24 hours		Per Cycle		Potable Gal. per 100 lbs.	Condenser Gal. per 100 lbs.	kWh Used per 100 lbs.	Max. Fuse Size or HACR Circuit Breaker	Amperage	Voltage				
		70°/ 50°F	90°/ 70°F	Lbs.	Cubes	90°/ 70°F	90°/ 70°F	90°/ 70°F							
Air-Cooled	KM-515MAH	527	450	9.8	480	18.5	N/A	5.9	20A	11.7A	115V/60/1	9,500	175 lbs.	★	
Water-Cooled	KM-515MWH	462	446	10.0	480	23.0	106	5.1	20A	9.6A	115V/60/1	8,200	175 lbs.		
Remote Air-Cooled	KM-515MRH	491	452	10.3	480	20.8	N/A	5.8	20A	11.3A	115V/60/1	8,500	175 lbs.		

### KM Cube Dimensions\*



\* approximate size in inches, image not to scale

### Operating Limits

- Ambient Temp Range 45 - 100°F
- Water Temp Range 45 - 90°F
- Water Pressure 10 - 113 PSIG
- Voltage Range 104-127V

### Service

- Panels easily removed and all components accessible for service.
- Allow 6" (15 cm) clearance at rear, sides, and top for proper air circulation and ease of maintenance/service.

### Plumbing

- Icemaker Water Supply Line: Minimum 1/4" Nominal ID Copper Water Tubing or Equivalent
- Icemaker Drain Line: Minimum 3/4" Nominal ID Hard Pipe or Equivalent
- Water-Cooled Model (Lines Must Be Independent of Icemaker)
- Condenser Water Supply Line: Minimum 1/4" Nominal ID Copper Water Tubing or Equivalent
- Condenser Drain/Return Line: Minimum 1/4" Nominal ID Hard Pipe (open drain system) or Copper Water Tubing (closed loop system) or Equivalent



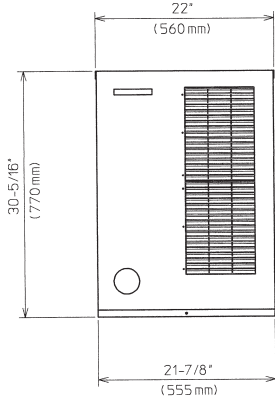
# KM-515M\_H

## SLIM-LINE MODULAR CRESCENT CUBER

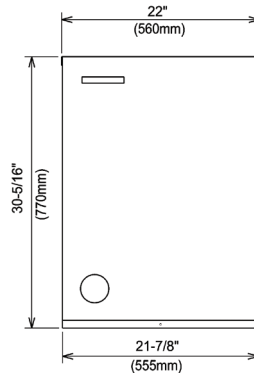


KM-515M\_H  
03/30/17  
Item # 13217

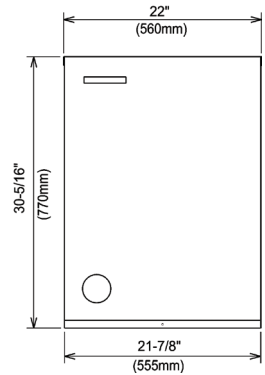
FRONT VIEW



AIR-COOLED

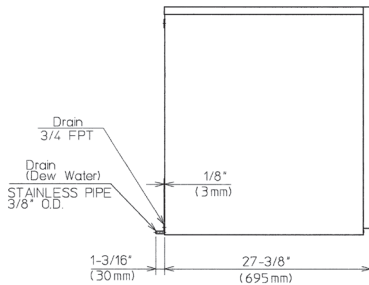


WATER-COOLED

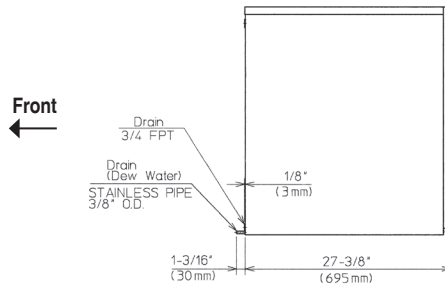


REMOTE AIR-COOLED

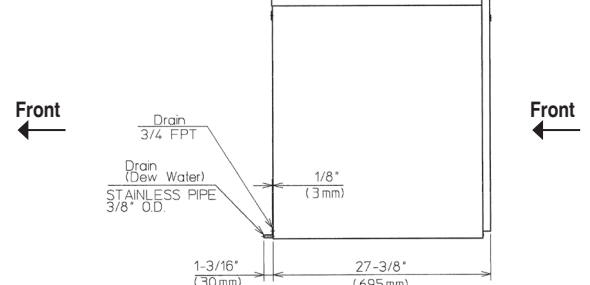
SIDE VIEW



AIR-COOLED

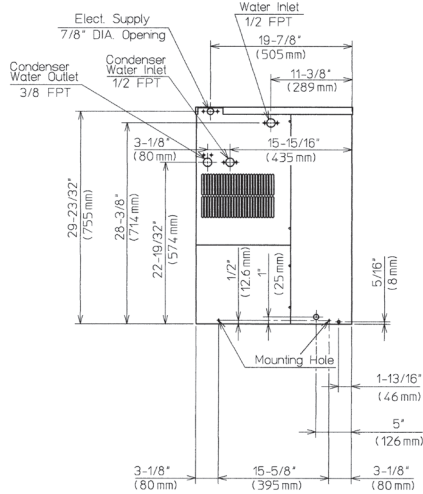


WATER-COOLED

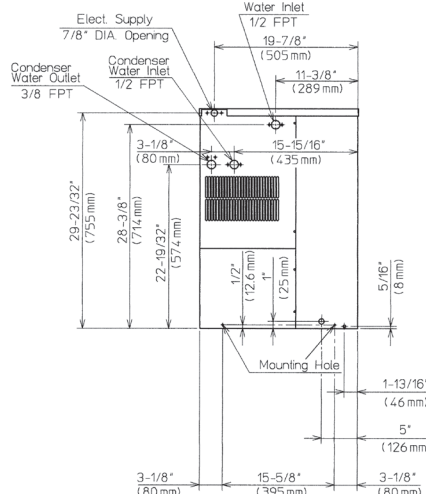


REMOTE AIR-COOLED

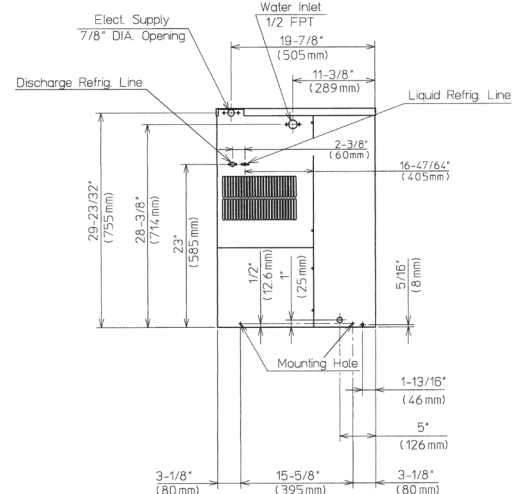
REAR VIEW



AIR-COOLED

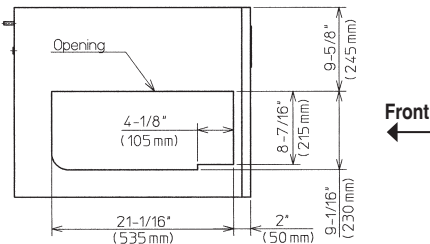


WATER-COOLED



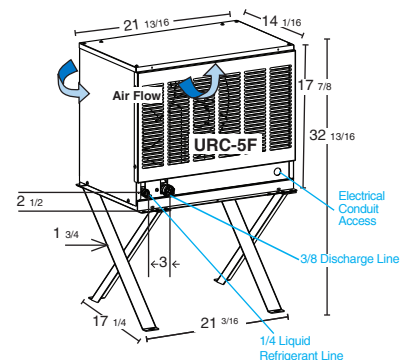
REMOTE AIR-COOLED

BOTTOM VIEW



AIR-COOLED  
WATER-COOLED  
REMOTE AIR-COOLED

**URC-5F Remote Condenser (Sold Separately)**  
**(W x D x H) 21<sup>13/16</sup> x 14<sup>1/16</sup> x 32<sup>13/16</sup>**  
For Use with KM-515MRH



Pre-Charged Tubing Kits (Sold Separately)  
20' R404-2046-2  
35' R404-3546-2  
Voltage supply for the URC Remote Condenser is supplied from the Ice Maker. No additional circuit is required.