


SCOTSMAN

AIR, WATER, & REMOTE COOLED MODULAR CONTOUR CUBERS



CME656

VOLUME PRODUCTION • 24 HOUR

|  Certified & rated in accordance with ARI standard 810-95 | Air-Cooled | | Water-Cooled | | Remote | |
|--|------------------|----------------------|------------------|----------------------|------------------|----------------------|
| | 70°/50° lbs./kg. | ARI 90°/70° lbs./kg. | 70°/50° lbs./kg. | ARI 90°/70° lbs./kg. | 70°/50° lbs./kg. | ARI 90°/70° lbs./kg. |
| CME656-32 | 705/320 | 555/252 | 645/293 | 560/255 | 625/284 | 550/259 |
| CME656-3 | 705/320 | 555/252 | 645/293 | 560/255 | 625/284 | 550/259 |

VALUE THE DIFFERENCE OF CM³ ICE MACHINES:

- CM³ series offers the lowest lifetime operating costs based on lower water and electrical usage. Combine that with a competitive purchase price and the best warranty in the industry and you have the lowest lifetime ownership cost. Period.
- AutoIQ™ Control System monitors and controls the ice machines' functions to ensure consistent ice production and reduce operating costs.
- CM³ Evaporator is a hot tin dipped, molecularly bonded plate that has been field tested and proven 99.4% reliable over 5 years.
- Rust-free Polyethylene Base and Food Zone is insulated with 1-1/2" of foam which keeps water and food zone cool to reduce operating costs and is backed by a Lifetime Rust-free Warranty.
- Contemporary styling and stainless steel finish make the CM³ a perfect addition to any operation.
- Now protected with AquaArmor™ utilizing AgION™, a silver-based anti-microbial compound that reduces the growth of bacteria, microorganisms, algae, mold and slime on ice machine surfaces. AgION is a trademark of AgION Technologies and is registered with the EPA.

WARRANTY See your dealer for complete warranty details.

- Limited Lifetime Rust Free Warranty on Food Zone
- 3 years parts and labor on all components.
- 5 years parts and labor on the CME evaporator.
- 5 years parts on the compressor and condenser.

BIN OPTIONS:



BIN: HTB350



BIN: BH550



APPROX. CUBE SIZE:
1 3/8" X 1 3/8" X 5/8" THICK

| SCOTSMAN MODULAR BINS | | | | | |
|-----------------------|---------------------|------------------|----------------------|---------|----------------------|
| Model Number | Dimensions W"xD"xH" | ARI Bin Capacity | Application Capacity | Finish* | Ship Weight lbs./kg. |
| HTB250 | 30 x 31.5 x 22.5 | 190 LBS. | 250 LBS. | HTB | 80/36 |
| HTB350 | 30 x 31.5 x 29.5 | 270 LBS. | 350 LBS. | HTB | 90/41 |
| HTB555 | 30 x 34.5 x 44.5 | 420 LBS. | 535 LBS. | HTB | 110/50 |
| BH550 | 30 x 31.5 x 44 | 410 LBS. | 520 LBS. | SS | 140/64 |

* (HTB) Linear Low Density Polyethylene—Grey color.
(SS) Stainless Steel with Polyethylene liner.

 Certified & rated in accordance with ARI standard 820-95

This product qualifies for the following listings:

 Rated in accordance with ARI standard 810-95

 AgION
ANTIMICROBIAL

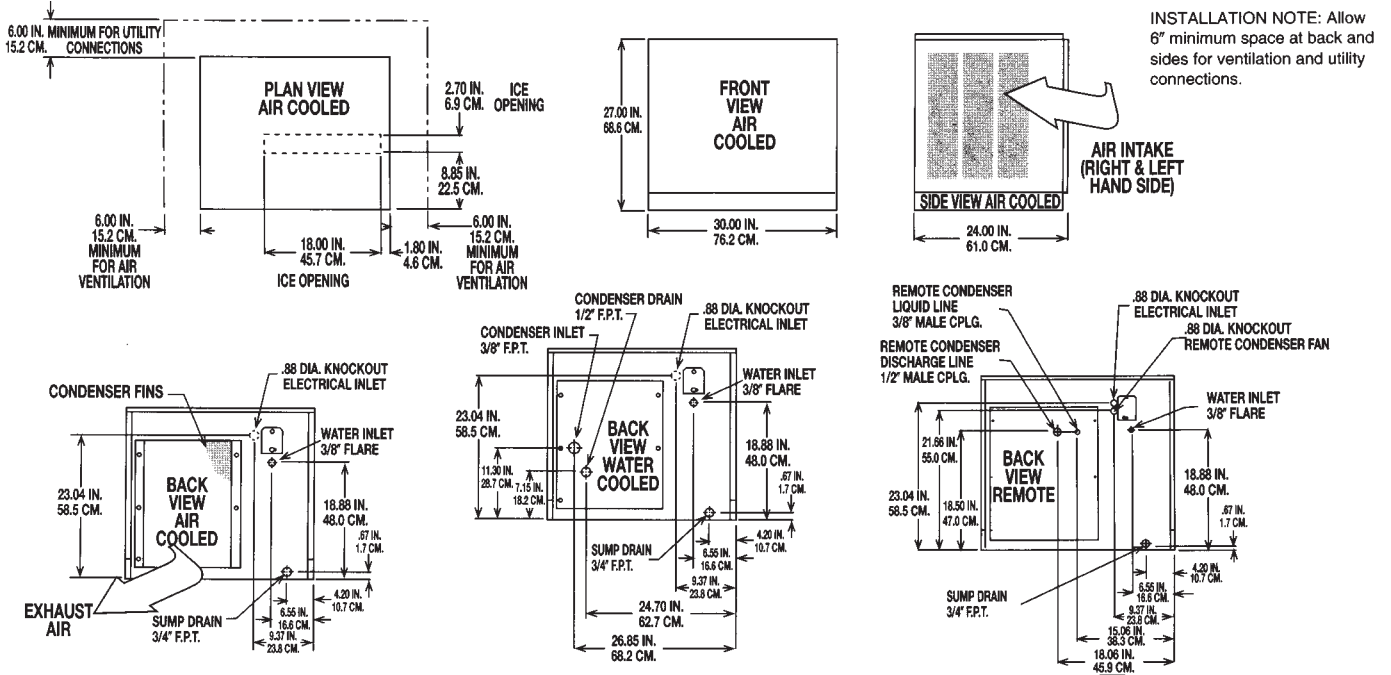
CERTIFIED

 9001:2000

 Scotsman®



Ice Machine Specifications



All models: Dimensions: W x D x H Unit: 30" x 24" x 27" Shipping Carton: 33 1/2" x 28" x 32 1/2"

| Model Number | Condenser Unit | Basic Electrical Volts/Hz/Phase | Max. Fuse Size or HACR Circuit Breaker | Comp. HP | Circuit Wires | Min. Circuit Ampacity | BTU's per hour | Shipping Weight lbs./kg. | Power* Consumption KWH/100 lbs. 90°/70° F | | Water Usage* Gallons/100 lbs. 90°/70° F | |
|--------------|----------------|---------------------------------|--|----------|---------------|-----------------------|----------------|--------------------------|---|-----------|---|---------------------|
| | | | | | | | | | 90°/70° F | 90°/70° F | Potable 90°/70° F | Condenser 90°/70° F |
| CME656AS-32F | AIR | 208-230/60/1 | 20 | 1 1/2 | 2 | 13.6 | 11,000 | 225/102 | 6.6 | 24.0 | - | - |
| CME656WS-32F | WATER | 208-230/60/1 | 20 | 1 1/2 | 2 | 12.7 | 11,000 | 225/102 | 6.0 | 26.0 | 130 | 130 |
| CME656RS-32F | REMOTE | 208-230/60/1 | 20 | 1 1/2 | 2 | 16.9 | 11,000 | 235/107 | 7.6 | 28.0 | - | - |
| CME656AS-3F | AIR | 208-230/60/3 | 15 | 2 | 3 | 6.6 | 11,000 | 220/100 | 6.6 | 24.0 | - | - |
| CME656WS-3F | WATER | 208-230/60/3 | 15 | 2 | 3 | 5.8 | 11,000 | 225/102 | 6.0 | 26.0 | 130 | 130 |
| CME656RS-3F | REMOTE | 208-230/60/3 | 15 | 2 | 3 | 5.9 | 11,000 | 235/102 | 7.6 | 28.0 | - | - |

All units with Stainless Steel finish.
Refrigerant: R-404A.

OPTIONS:
Stacking Kit: Number KSCME6-30 (CME256, CME506, CME656 or CME806, CME656 on CME256, CME506, CME656, or CME806).

REMOTE CONDENSER - Comes with adjustable legs
Dimensions: W x D x H : 24.0" x 44.25" x 29.25" for ERC201
24.0" x 54.25" x 29.25" for ERC402

| Model Number | For Use With | Cond. Unit | Finish Basic | Electrical Volts/Hz/Phase | No. of Wires | Min. Circuit Ampacity | Max Fuse Size or HACR Circuit Braker |
|--------------|--------------|------------|--------------|---------------------------|--------------|-----------------------|--------------------------------------|
| ERC201-32A | 1-CME656R | Air | Galvanized | 208-230/60/1 | 2 | 2.6 | 15 |
| ERC402-32A | 2-CME656R | Air | Galvanized | 208-230/60/1 | 2 | 2.6 | 15 |

PRE-CHARGED REFRIGERANT TUBE KITS: 10-Foot, RTE10 • 25-Foot, RTE25 • 40-Foot, RTE40 • 75-Foot, RTE75 R-404A Refrigerant

KCMR-230—Fan Relay Kit: Required to connect two CME656R's to one ERC402-32A

Scotsman's ice machines are not designed for outdoor installations. Scotsman remote condensers are designed for outdoor installations.

Machine requires voltage indicated on rating name plate. Failures caused by improper voltage are not considered factory defects. Extended periods of operation at temperatures exceeding limitations constitutes misuse under the terms of Scotsman Manufacturer's Limited Warranty, resulting in a loss of warranty coverage. Specifications and design are subject to change without notice.

Consult Your Local SCOTSMAN Representative At:

IMPORTANT OPERATING REQUIREMENTS:

| | Minimum | Maximum |
|--------------------|-----------------|----------------|
| Air Temperatures | 50°F (10°C) | 100°F (37.7°C) |
| Water Temperatures | 40°F (4.4°C) | 100°F (37.7°C) |
| Remote Cond. Temps | -20°F (-28.9°C) | 120°F (48.9°C) |
| Water Pressures | 20 PSIG | 120 PSIG |
| Electrical Voltage | -5% | +10% |

YOU'LL VALUE THE DIFFERENCE™

775 Corporate Woods Parkway • Vernon Hills, IL 60061 • 1-800-SCOTSMAN • Fax: (847) 913-9844
Visit our website at: www.scotsman-ice.com • E-mail: customer.service@scotsman-ice.com

